

WALLACE AV.

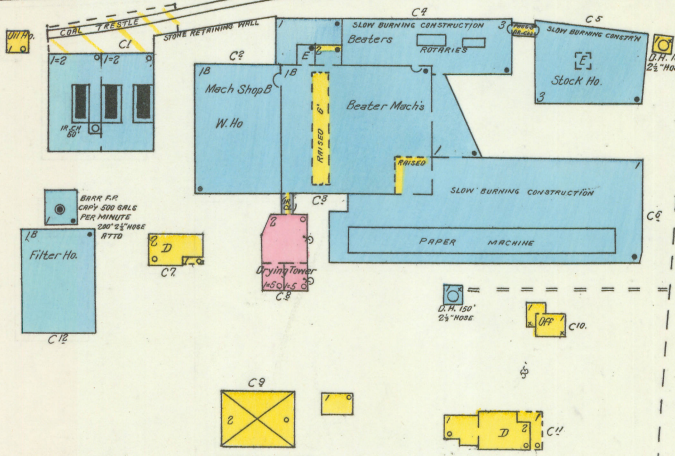
BRANDYWINE AV.

P. R. R.

STONE ARCH
BRIDGE
OVER STREET

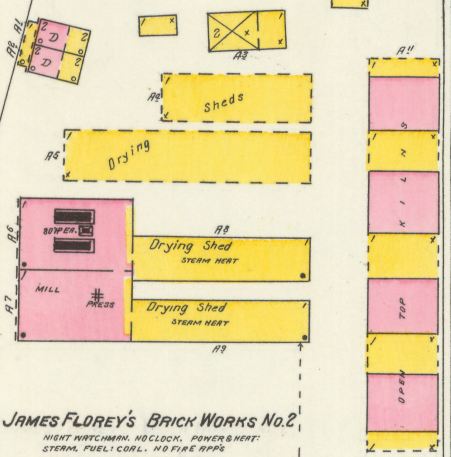
FRANK P. MILLER PAPER CO.

RUN DAY & NIGHT. WATCHMAN WHEN NOT RUNNING. HYD. & P. PUMP AS SHOWN 700' 2 1/2" HOSE. POWER & HEAT: STEAM. FUEL: COAL. LIGHTS: ELEC.



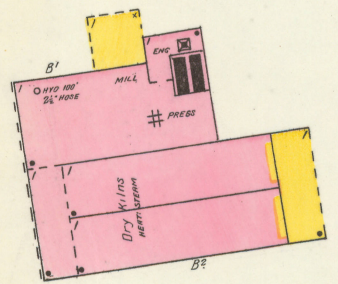
JAMES FLOREY'S BRICK WORKS No. 2

NIGHT WATCHMAN. NO CLOCK. POWER & HEAT: STEAM. FUEL: COAL. NO FIRE BRICKS



JAMES FLOREY'S BRICK WORKS No. 1

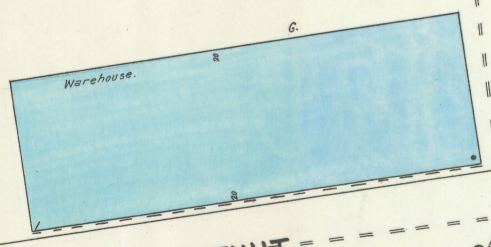
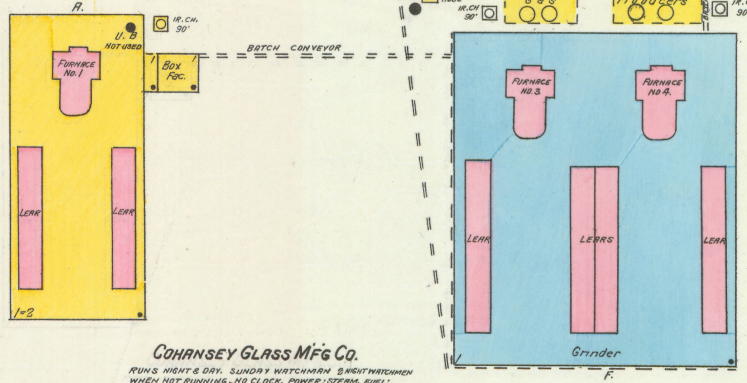
NIGHT WATCHMAN. NO CLOCK. HYD. & HOSE AS SHOWN. POWER & HEAT: STEAM. FUEL: COAL. NO LIGHTS



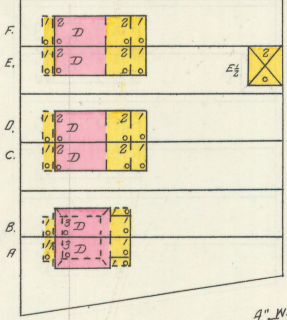
Half Mile N. of Swan Hotel.

COHANSEY GLASS MFG CO.

RUNS NIGHT & DAY. SUNDAY WATCHMAN & NIGHTWATCHMAN WHEN NOT RUNNING. NO CLOCK. POWER: STEAM. FUEL: COAL. LIGHTS: KITSON OIL LAMP. HYD. 200' 1 1/2" HOSE. CITY WATER. WATER PAILS DISTRIBUTED



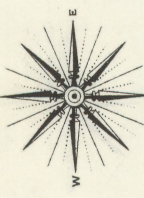
GRANT



CHESTNUT

LINCOLN

JACKSON



Scale of Feet.

