

THIS COPY DELIVERED TO THE  
AUG 19 1898  
Hall of Maps

**SANBORN - PERRIS MAP CO. LIMITED**  
178 119 Broadway  
NEW YORK

Population 2,500  
1 Steam & 10 Hand Engines  
No Independent Horse Carts  
Water Facilities: See Note.

Prevailing Winds: West.

**DOWNTOWN.**  
CHESTER CO. PA.  
JUNE 1898

SCALE 50 FT. TO AN INCH.  
COPYRIGHT 1898 BY THE SANBORN - PERRIS MAP CO. LIMITED

1898  
43887

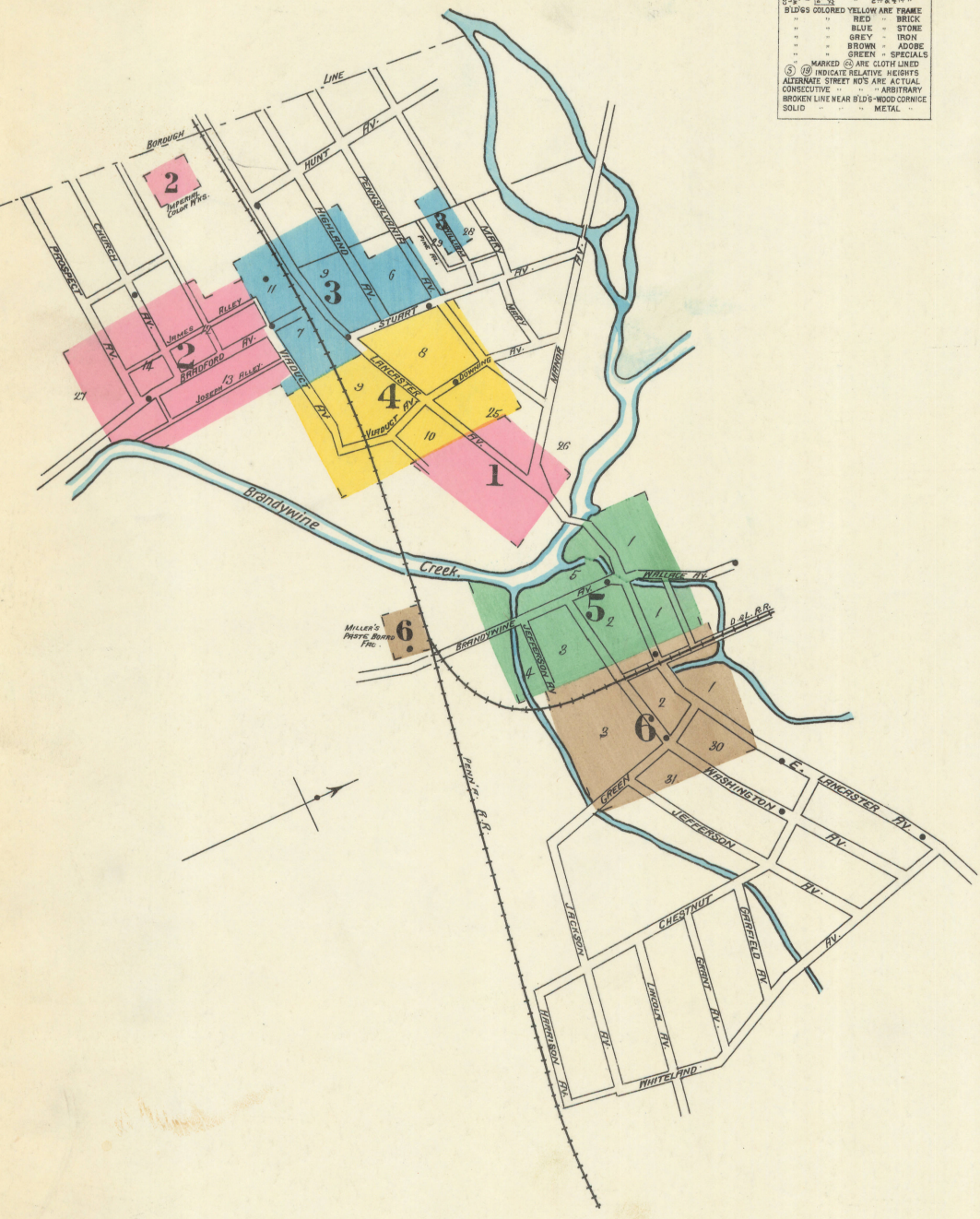
**KEY**

3	FIRE WALL GIN. AB. ROOF
12	MASSIVE ROOF
18	STEAM BOILER
19	STEAM BOILER
20	STEAM BOILER
21	STEAM BOILER
22	STEAM BOILER
23	STEAM BOILER
24	STEAM BOILER
25	STEAM BOILER
26	STEAM BOILER
27	STEAM BOILER
28	STEAM BOILER
29	STEAM BOILER
30	STEAM BOILER
31	STEAM BOILER
32	STEAM BOILER
33	STEAM BOILER
34	STEAM BOILER
35	STEAM BOILER
36	STEAM BOILER
37	STEAM BOILER
38	STEAM BOILER
39	STEAM BOILER
40	STEAM BOILER
41	STEAM BOILER
42	STEAM BOILER
43	STEAM BOILER
44	STEAM BOILER
45	STEAM BOILER
46	STEAM BOILER
47	STEAM BOILER
48	STEAM BOILER
49	STEAM BOILER
50	STEAM BOILER
51	STEAM BOILER
52	STEAM BOILER
53	STEAM BOILER
54	STEAM BOILER
55	STEAM BOILER
56	STEAM BOILER
57	STEAM BOILER
58	STEAM BOILER
59	STEAM BOILER
60	STEAM BOILER
61	STEAM BOILER
62	STEAM BOILER
63	STEAM BOILER
64	STEAM BOILER
65	STEAM BOILER
66	STEAM BOILER
67	STEAM BOILER
68	STEAM BOILER
69	STEAM BOILER
70	STEAM BOILER
71	STEAM BOILER
72	STEAM BOILER
73	STEAM BOILER
74	STEAM BOILER
75	STEAM BOILER
76	STEAM BOILER
77	STEAM BOILER
78	STEAM BOILER
79	STEAM BOILER
80	STEAM BOILER
81	STEAM BOILER
82	STEAM BOILER
83	STEAM BOILER
84	STEAM BOILER
85	STEAM BOILER
86	STEAM BOILER
87	STEAM BOILER
88	STEAM BOILER
89	STEAM BOILER
90	STEAM BOILER
91	STEAM BOILER
92	STEAM BOILER
93	STEAM BOILER
94	STEAM BOILER
95	STEAM BOILER
96	STEAM BOILER
97	STEAM BOILER
98	STEAM BOILER
99	STEAM BOILER
100	STEAM BOILER

**NOTE.**  
WATER WKS: - GRAVITY SYSTEM - SUPPLY FROM MOUNTAIN STREAM - RESERVOIR 3 MILES W. OF PUBLIC SCHOOL, ELEV. 107'.  
AVY. LANCASTER AV. AT SHINE POINT; CAP: 200,000 GALS - 175'.  
3 MILES OF MAINS 4" TO 10" - 18 1/2" DIA.  
VOLUNTARY FIRE DEPT. 2 HOSE CO'S - 1 H. & L. TRUCK -  
STEAMER - 1800 1/2" HOSE IN GOOD CONDITION.

LIBRARY OF CONGRESS  
JUL 22 1898  
Register of Copyrights

TWO COPIES RECEIVED



### INDEX.

STREETS.	SECT.	BLK.	SECT.	BLK.
Bradford Ave.	100-321	2	Central Presbyterian Church	6
Brandywine Ave.	1-224	5	D. & L. R. R. Freight Depot	6
Church Ave.	200-259	2	Downingtown Electric Light Station	5
Dowing Ave.	1-130	6	Gas Works	3
Green	1-130	6	MFG Co.	6
Highland Ave.	3 & 4		Florey, J., Brick Works	6
James Alley	2		Guthrie, G. T., Planing Mill	6
Joseph Alley	5 & 6	2	Wallace Ave.	5
Lancaster Ave.	25-68	1	Washington Ave.	1-142 5
"	69-148	4	"	143-328 6
"	149-159	4	William	215-250 3
"	150-160	3		
"	200-321	3		
"	1-143	5		
"	142-330	6		
Pennsylvania Ave.	1-140	4		

SPECIALS.	SECT.	BLK.	SECT.	BLK.
A. M. E. Church	2		Pennsylvania Hotel	3
Austin, S., Bicking Paper Mill, No. 1	5		" R. R. Depot	3
" " " " " 2	6		Philips Bros. Flour Mill	4
Baptist Church	1		Public School	1
Central Hall	1		St. Joseph's Catholic Church	2
Swan Hotel	5			

\* Indicates only one side of Street shown.

